

700 SERIES

MOTOR RUN CAPACITORS DUAL CAPACITANCE



APPLICATION

This range of a.c. capacitors is intended for use in motor run applications where two independent capacitors, whether of the same or of dissimilar value, are required in a single housing.

A typical application is in air conditioning units where capacitors are required for both compressor and fan motors.

Cambridge Capacitors undertake manufacture in their ISO 9000 quality approved factory to comply with the requirements of international specifications including UL and CSA.

DESCRIPTION


A range of metallised polypropylene film capacitors with concentric windings to provide two independent capacitors in the most space efficient form.

The cylindrical housing is moulded in a flame retardant plastic. Quick connect terminations are individually identified for ease of assembly and are separated by a moulded barrier providing a high degree of terminal electrical isolation.

The use of high quality metallised polypropylene film combined with a resin seal inside the case avoids the need for impregnating fluids, thus eliminating any risk of leakage.

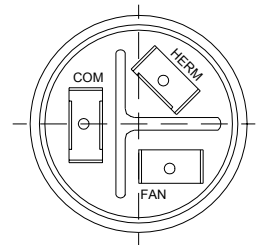
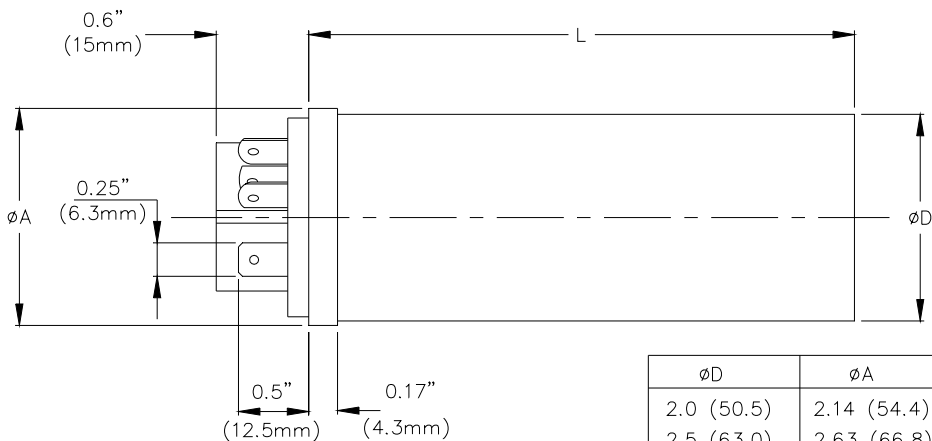
Polypropylene film has excellent dissipation characteristics, with a typical power loss only 10% of that of an equivalent capacitor with paper dielectric.

SPECIFICATION

Nominal Operating Voltage	240V a.c. 50/60Hz 370V a.c. 50/60Hz 440V a.c. 50/60Hz	Refer overleaf for the standard 700 Series range plus ordering information and dimensions. 
Capacitance range	3 - 30 μ F +15 - 60 μ F	
Capacitance tolerance	\pm 10%	
Operating temperature range	-25 to +70°C	
Dissipation factor (tan δ)	<0.01 max at 1 KHz	
Design Life	60,00 hours at rated voltage and 70°C case temperature with 94% survival	
Approvals	UL File No. E128031 (N) CSA accepted component	

700 SERIES STANDARD RANGE AND DIMENSIONS

CAPACITANCE μF	240V Case Size (∅D x L) Inches (mm)	370V Case Size (∅D x L) Inches (mm)	440V Case Size (∅D x L) Inches (mm)
15 + 5	2.0 x 3.03 (50.5 x 77)	2.0 x 3.03 (50.5 x 77)	2.0 x 3.03 (50.5 x 77)
15 + 7.5	2.0 x 3.03 (50.5 x 77)	2.0 x 3.03 (50.5 x 77)	2.0 x 3.03 (50.5 x 77)
20 + 5	2.0 x 3.03 (50.5 x 77)	2.0 x 3.03 (50.5 x 77)	2.0 x 3.03 (50.5 x 77)
20 + 7.5	2.0 x 3.03 (50.5 x 77)	2.0 x 3.03 (50.5 x 77)	2.0 x 3.82 (50.5 x 97)
20 + 10	2.0 x 3.03 (50.5 x 77)	2.0 x 3.03 (50.5 x 77)	2.0 x 3.82 (50.5 x 97)
25 + 5	2.0 x 3.03 (50.5 x 77)	2.0 x 3.03 (50.5 x 77)	2.0 x 3.82 (50.5 x 97)
25 + 7.5	2.0 x 3.03 (50.5 x 77)	2.0 x 3.03 (50.5 x 77)	2.0 x 3.82 (50.5 x 97)
25 + 10	2.0 x 3.03 (50.5 x 77)	2.0 x 3.03 (50.5 x 77)	2.0 x 3.82 (50.5 x 97)
30 + 5	2.0 x 3.03 (50.5 x 77)	2.0 x 3.03 (50.5 x 77)	2.5 x 3.82 (63 x 97)
30 + 7.5	2.0 x 3.82 (50.5 x 97)	2.0 x 3.82 (50.5 x 97)	2.5 x 3.82 (63 x 97)
30 + 10	2.0 x 3.82 (50.5 x 97)	2.0 x 3.82 (50.5 x 97)	2.5 x 3.82 (63 x 97)
35 + 5	2.0 x 3.82 (50.5 x 97)	2.0 x 3.82 (50.5 x 97)	2.5 x 3.82 (63 x 97)
35 + 7.5	2.0 x 3.82 (50.5 x 97)	2.0 x 3.82 (50.5 x 97)	2.5 x 3.82 (63 x 97)
35 + 10	2.0 x 3.82 (50.5 x 97)	2.0 x 3.82 (50.5 x 97)	2.5 x 3.82 (63 x 97)
40 + 5	2.0 x 3.82 (50.5 x 97)	2.0 x 3.82 (50.5 x 97)	2.5 x 3.82 (63 x 97)
40 + 7.5	2.0 x 3.82 (50.5 x 97)	2.0 x 3.82 (50.5 x 97)	2.5 x 3.82 (63 x 97)
40 + 10	2.0 x 3.82 (50.5 x 97)	2.0 x 3.82 (50.5 x 97)	2.5 x 3.82 (63 x 97)
45 + 5	2.0 x 3.82 (50.5 x 97)	2.0 x 3.82 (50.5 x 97)	2.5 x 3.82 (63 x 97)
45 + 7.5	2.0 x 3.82 (50.5 x 97)	2.0 x 3.82 (50.5 x 97)	2.5 x 3.82 (63 x 97)
45 + 10	2.5 x 3.82 (63 x 97)	2.5 x 3.82 (63 x 97)	2.5 x 3.82 (63 x 97)
50 + 5	2.5 x 3.82 (63 x 97)	2.5 x 3.82 (63 x 97)	2.5 x 3.82 (63 x 97)
50 + 7.5	2.5 x 3.82 (63 x 97)	2.5 x 3.82 (63 x 97)	2.5 x 3.82 (63 x 97)
50 + 10	2.5 x 3.82 (63 x 97)	2.5 x 3.82 (63 x 97)	2.5 x 3.82 (63 x 97)
55 + 5	2.5 x 3.82 (63 x 97)	2.5 x 3.82 (63 x 97)	2.5 x 3.82 (63 x 97)
55 + 7.5	2.5 x 3.82 (63 x 97)	2.5 x 3.82 (63 x 97)	2.5 x 3.82 (63 x 97)
55 + 10	2.5 x 3.82 (63 x 97)	2.5 x 3.82 (63 x 97)	2.5 x 3.82 (63 x 97)



∅D	∅A
2.0 (50.5)	2.14 (54.4)
2.5 (63.0)	2.63 (66.8)