

635 SERIES

LIGHTING CAPACITORS TO EN61048/A2 & EN61049 PARALLEL COMPENSATION



APPLICATION

These capacitors have been designed for power factor correction of fluorescent and other discharge lamp light fittings.

The 635 series is suitable for applications in parallel compensation circuits at supply voltages up to 250V a.c

This series is a range which is approved to harmonised CENELEC norms EN61048/A2 & EN61049, Type A, as tested and approved by BS

DESCRIPTION


Metallised polypropylene film capacitors, with a totally dry construction, which eliminates the risk of leakage normally associated with the liquid impregnated type.

The flame retardant plastic case is used with either a plain base or with a blip clip snap in type fixing and M8 mounting stud. Nuts and washers not normally supplied, but can be specified on request.

Both types have a flat along the side for adhesive pad fixing.

The capacitor is provided with a 4-way wire grip connector complete with discharge resistor. Leaded versions are available – can be supplied fitted or loose.

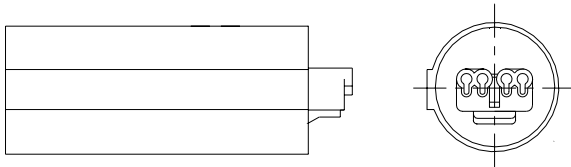
SPECIFICATION

Nominal Operating Voltage	250V a.c. 50/60Hz	Refer overleaf for the standard 635 Series range plus ordering information and dimensions. 
Capacitance range	2.0 to 10 μ F	
Capacitance tolerance	\pm 10% (\pm 5% on request)	
Operating temperature range	-40 to +85°C	
Dissipation factor ($\tan \delta$)	<0.001 at 50 Hz	
Approvals to EN61048/A2 & EN61049	ENEC	

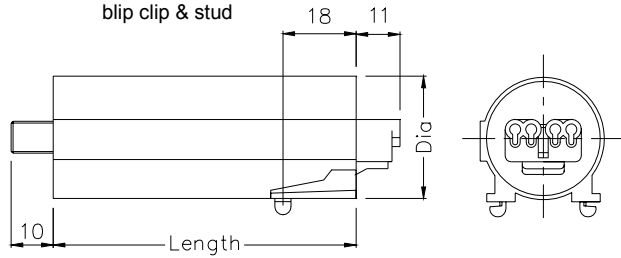
635 SERIES STANDARD RANGE AND DIMENSIONS

CAPACITANCE μF	CASE SIZE DIA X LENGTH (MM)	PART NUMBER	
		STYLE A	STYLE B
2	30 x 70	L02BY34	L02BY92NN
2.5	30 x 70	L02BY35	L02BY93NN
3.0	30 x 70	L03BY30	L03BY96NN
3.5	30 x 70	L03BY31	L03BY97NN
4.0	30 x 70	L04BW25	L04BW96NN
4.2	30 x 70	L04BW26	L04BW97NN
4.5	30 x 70	L04BW27	L04BW98NN
5.0	30 x 70	L05BY48	L05BY92NN
6.0	30 x 70	L06BX40	L06BY98NN
6.5	30 x 70	L06BX41	L06BY99NN
7.0	30 x 70	L07BY32	L07BY96NN
8.0	30 x 70	L08BX27	L08BX97NN
9.0	30 x 70	L09BY49	L09BY92NN
10.0	30 x 70	L10BY35	L10BY96NN

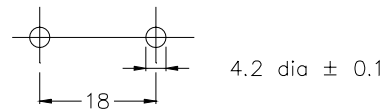
STYLE A - Plain Base



STYLE B - With integral blip clip & stud



STYLE B - Blip clip panel drilling for maximum panel thickness of 1.2



Orientation of connector with respect to blip clip may vary. Alignment is possible by prior agreement with sales department.